

PT. KAYAN MARINE SHIPYARD

Company Profile

# PRODUCTS

## Ship Building

### New Production:

1. Tug Boat
2. Barge
3. LCT
4. SPOB & Tanker
5. General Cargo
5. etc

## Ship Repair

### Ship Repair Includes :

1. Repair Side Hull
2. Blasting & Painting
3. Mechanical & Electrical Repair
4. Repair Piping System
5. etc

# Category



- 1 About Us
- 2 Service
- 3 Facilities
- 4 Contact Person

# 1. About Us

## History



2013

First Stage  
Clearing Stage

2014

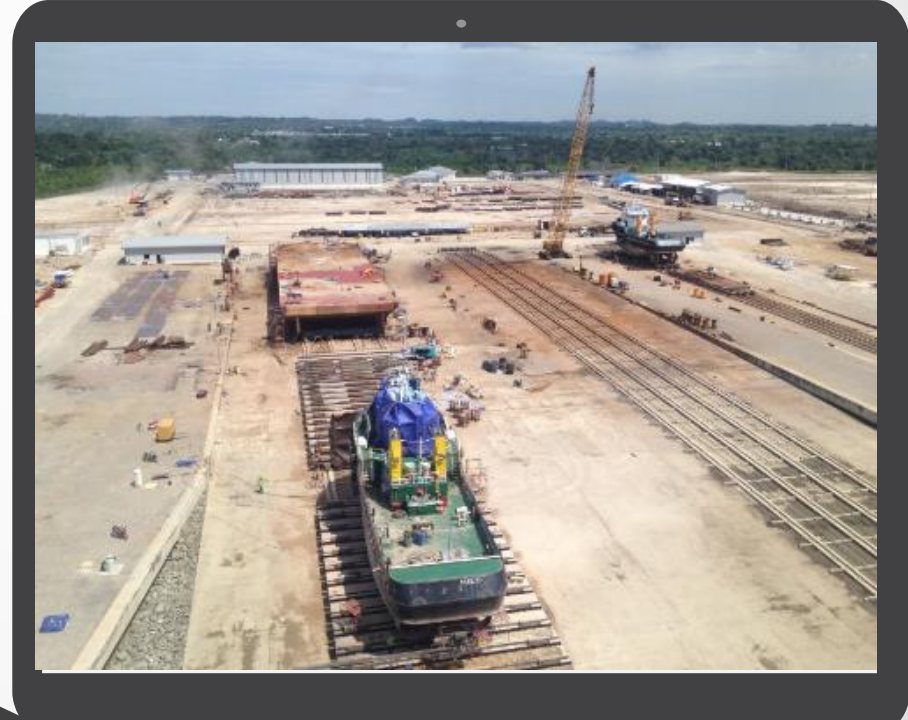
Second Stage  
Erection/Foundation Stage

2015

Third Stage  
Operational Stage

2016

Forth Stage  
Development Stage



# 1. About Us

## Vision

To support all business unit of KPP Group and others in the field of repair and construction of ships with world class standard.



## Mission

To improve revenue growth and maximize company value.

Committed to delivering the best quality of product and service to the customer based on efficient business processes, highly skilled employee, advanced technology and equipment, and punctual delivery.

Established worldwide and challenging job opportunity and continuously improving the quality of the employee.

To provide safe and friendly working environment.

Fulfill the corporate social responsibilities through maintain good relationships with the surrounding communities.

## 2. Service



## 3. Facility

Slipway 

PT. Kayan Marine Shipyard : 3 Slipways are available

Slipway No 1 & No 2

Length : 339.75m

Wide : 13.00m

Tilt Angle : R=4.8km (from CH.0.00m to CH.281.406m)  
1 : 25 (from CH.281m to CH.339.75m)

Types of Ship : Barge goods & crane (maximum 2,000ton)

Deadweight Ship : 4,170 DWT

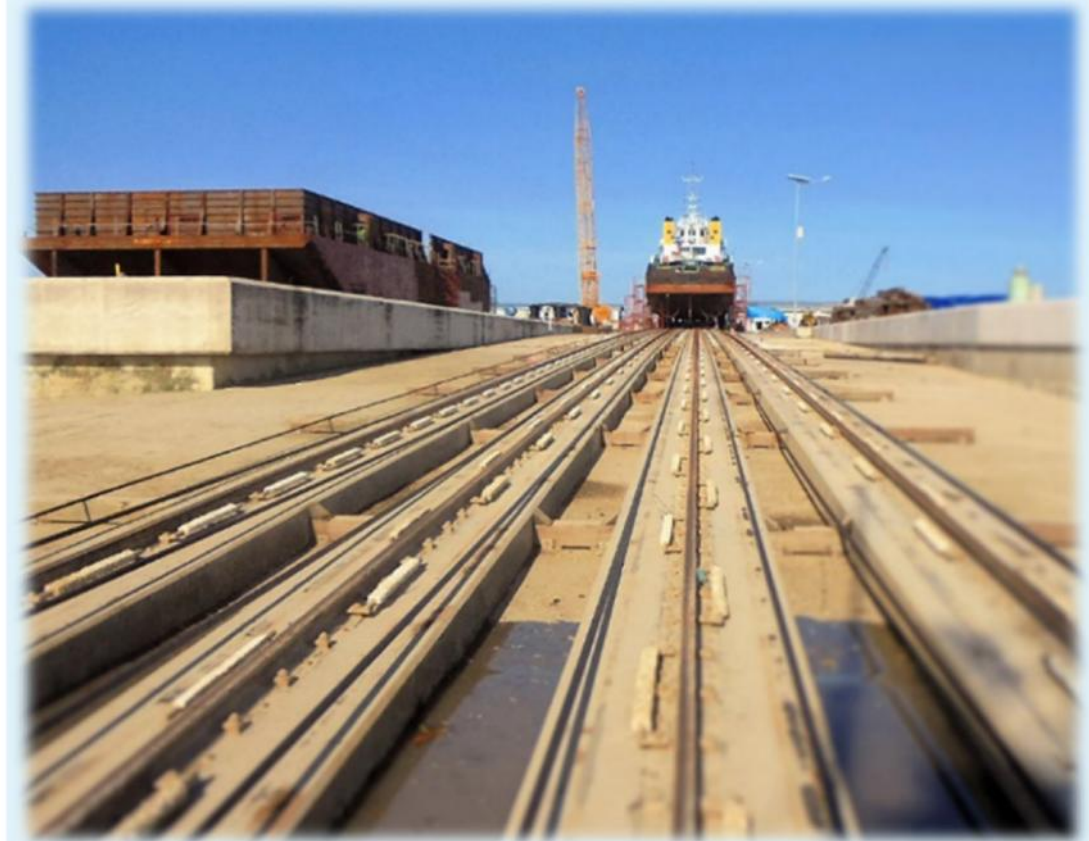
Slipway No 3

Length : 339.75m

Wide : 5.80m

Tilt Angle : Horizontal (from CH.0.00m to CH.35.00m)  
R=4.0km (From CH.35.00m to CH.339.75m)

Types of Ship : Tugboat (maximum 400ton)



## 3. Facility

PT. Kayan Marine Shipyard : 2 Winches are available

### Low Rolling Speed

Quality Ship	: 2230 ton
Tension	: 31.0 ton
Wire speed	: 6 m/min

### Rolling Speed Medium

Quality Ship	: 1470 ton
Tension	: 20.7 ton
Wire Speed	: 9 m/min

### Rolling Speed High

Quality Ship	: 740 ton
Tension	: 10.0 ton
Wire Speed	: 18 m/min



Slipway 



# 3. Facility

Unit Support 

## Crane

1 Unit Tadano Crane TR-250M-6  
Capacity 25 Ton

- 1 Unit Hitachi Crane KH 180-3  
Capacity 50 Ton
- 2 Units Kobelco Crane 7150  
Capacity 150 Ton



## Boomlift

2 Units of Articulating Boom Lift :  
GENIE Z-60/34-4 WD and GENIE Z-45/25 RT-4WD



# 3. Facility

Support 

## Forklift

2 Units Forklift with capacity 5 Ton and 7 Ton



## Genset House

2 Generators which Supply 1000 KVA of Electricity



### 3. Infrastructure

Area 

Factory Workshop



- Spacious Factory Workshop (1560 m<sup>2</sup>)

Maintenance Workshop



Modernized Maintenance Workshop (368 m<sup>2</sup>)

### 3. Infrastructure

Area 

Customer Mess



- Comfortable Mess Area for Customer (19 room / 10 toilets)

Oxymat



Oxymat which can Produce 72 Tubes of Oxygen / Day

### 3. Infrastructure

Area 

Warehouse



- Integrated Warehouse (648 m2)

Training Room



Training Room (180 m2)

# 3. Facility



- Yawei Bending Machine

Max. Force  
5000kN  
Max. Bending Length  
6200mm  
Phase 3  
Protect Grade IP54



- CNC Cutting  
Tanaka KT-790

Rail Span Max.  
20,000  
Effective Cutting  
Length Rail  
Length-4,000  
Number of Torches  
4 (max)

- Milling / Drilling  
Machine X6332Z

Max. Load  
300Kg  
Table Size  
1320x320mm  
Spindle Speed  
90-2000/8Rpm



- Drilling Machine  
Z3050x16/2

Max. Drilling Diameter  
65mm of Iron Cast  
55mm of Steel  
Plate size  
2400x1000mm  
Spindle Extension  
1600x350mm



### 3. Facility



- Horizontal Lathe CW6280B

Max. Swing Diameter Over Bed 800mm.  
Max. Swing Diameter Over Carriage 480.



- Lathe Machine DY-5100 X1600
- Lathe Machine 1,6mtr  
Power Max.  
5.5 Kw and 14.5 Amp

Hydraulic Shear  
LGS-13X6100

Max Cutting  
Thickness 13mm  
Max Cutting Length  
6100mm



Compressor  
Airman

Free Air delivery  
21.2m<sup>3</sup>/min  
Pressure 7.1 kgf/cm<sup>2</sup>  
Dimensions  
3,650x1,685x2,070  
Weight 3,300kg



# 3. Facility



Dynajet UHP 170

Pressure Class  
3000bar  
Min. Pressure  
500bar  
Min. Flow rate  
18.5l/min  
Max Flow rate  
40.5l/min



Robot

Pressure class  
3000bar  
Min. Pressure  
500bar  
Min. Flow rate  
18.5l/min  
Max Flow rate  
40.5l/min

- Miller Welding  
Machine XMT 350 OS

Multiprocess Welding  
1 – 3 Phase  
208-575 V  
50/60 Hz  
350 Amp @ 60% duty  
cycle



Compressor  
Kaeser CSD125

Max. Work press (g)  
12,0bar  
Max. Work press HP  
18,0bar  
Max. Work press LP  
16,0bar  
Work pressure  
11Kg/Cm2





# 3. Facility



## Manpower



Qualified, experienced and highly dedicated employees are selected to achieve the company's expectations and customer satisfaction during the manufacturing process as well as the end process.

## 4. Contact Person



- FAJAR TIRTAFAHDITYA
- Marketing Manager
- [fajar.tirtafadhitya@kppgroup.co.id](mailto:fajar.tirtafadhitya@kppgroup.co.id)
- 0812 10 787 31



KMSh





Thank You